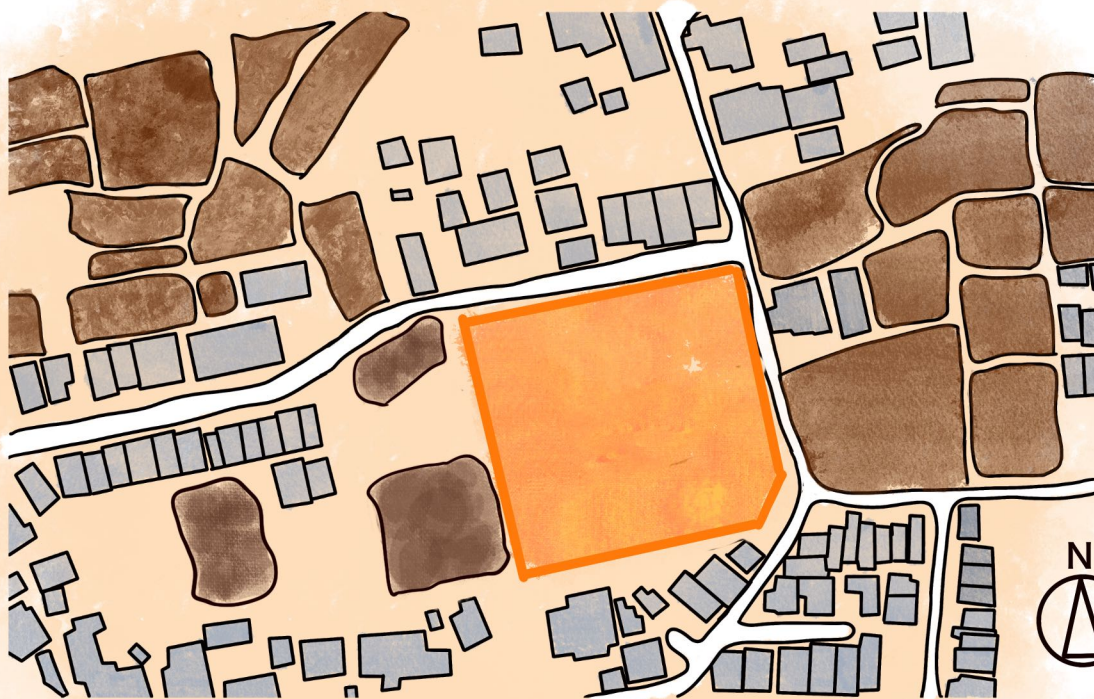


Sensory village





 : fields

Site Description

The community is aging and the number of elderly people with dementia is increasing. A community center originally existed on this site, which was used for breaks from field work and seasonal events, attracting many people.

Around the site are the Japanese houses and fields of the residents who are engaged in agriculture.



Location : Nagaokakyo, Kyoto, Japan

Site area : 4,100 m²





**Group home
for people with
dementia**

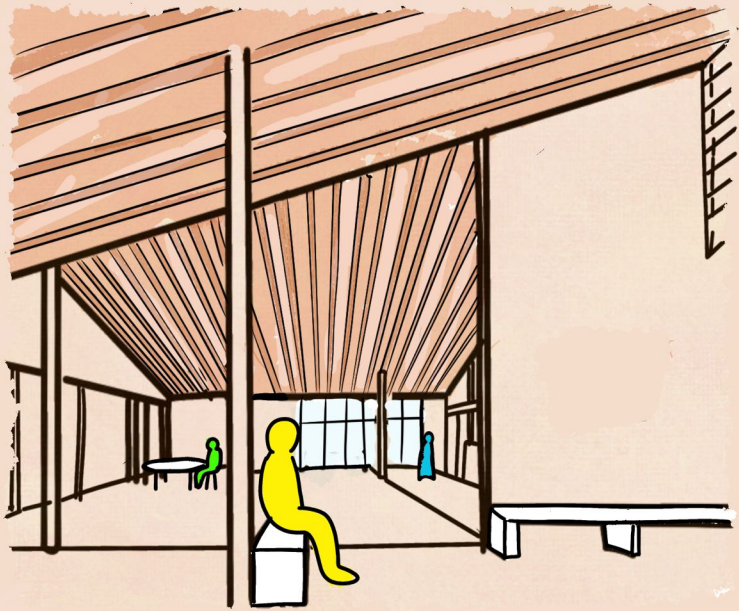
59,000mm

69,000mm

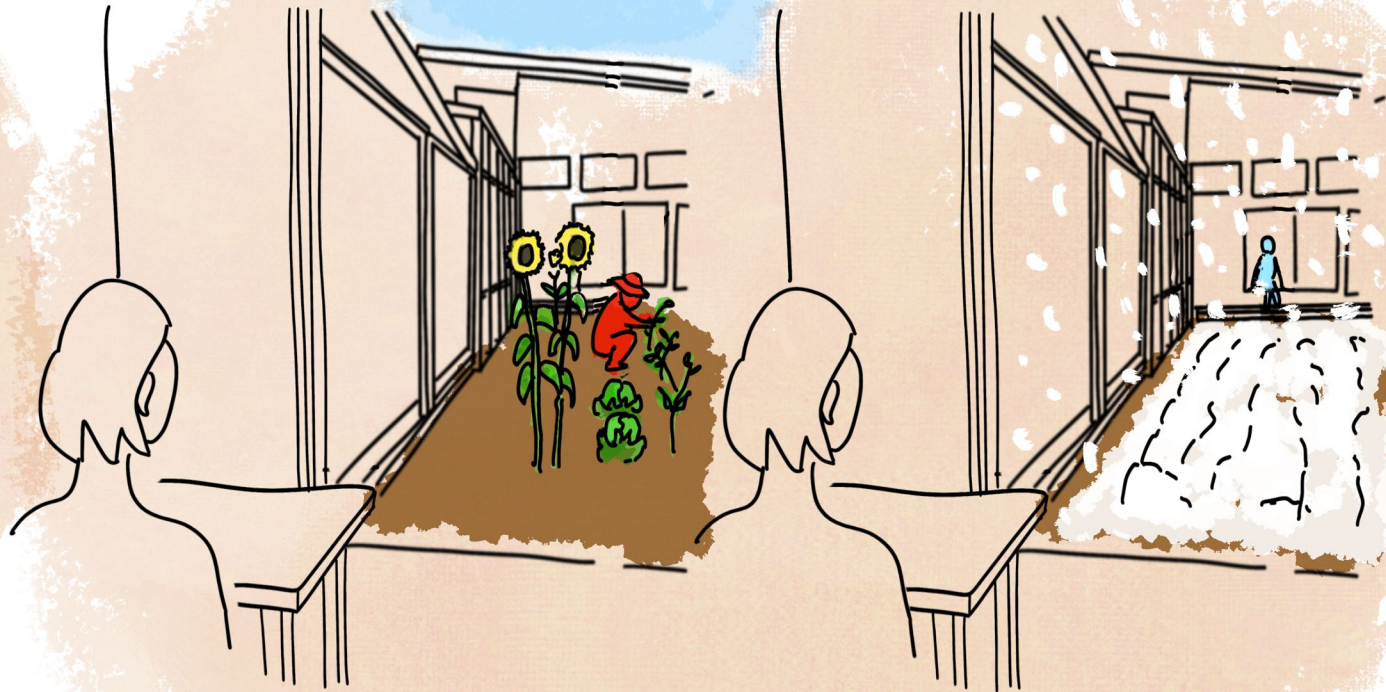


SUMMER

WINTER

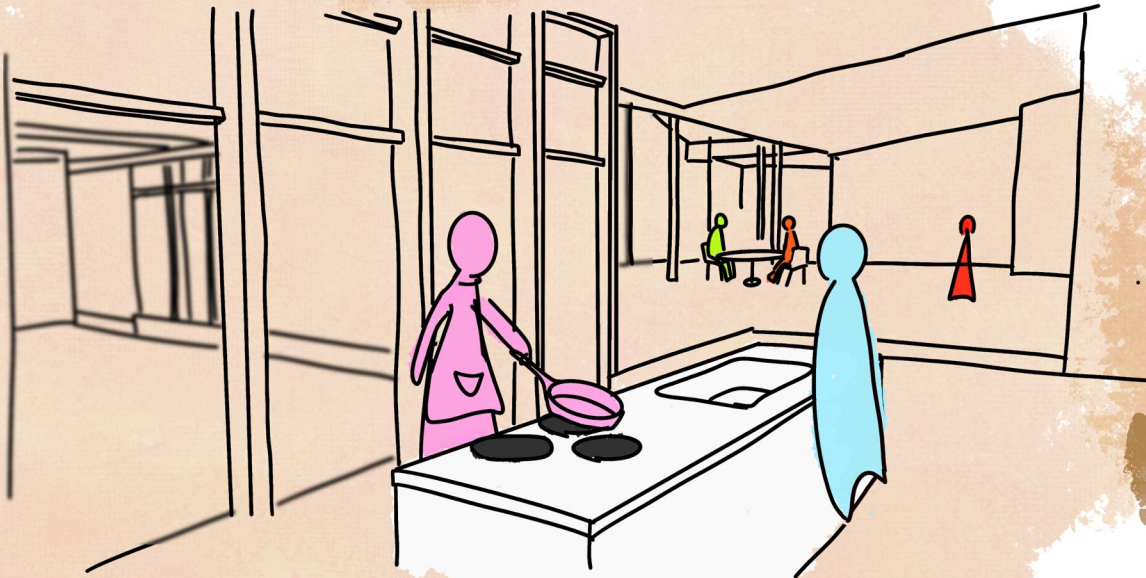


Changes in space created by different ceiling heights.

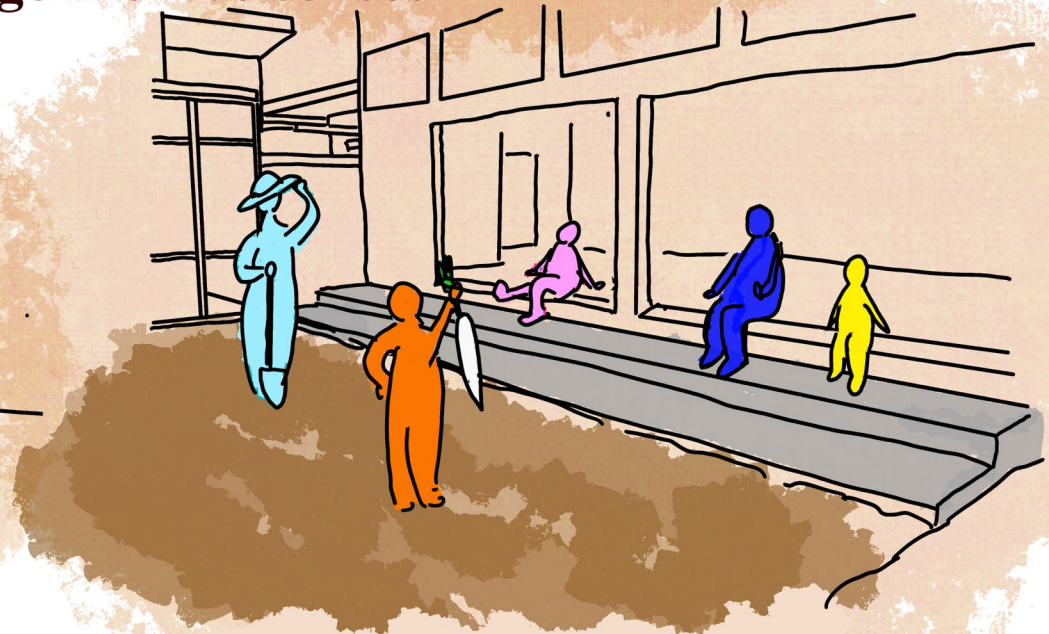


The changing seasons as seen from the window of a private room in a group home.

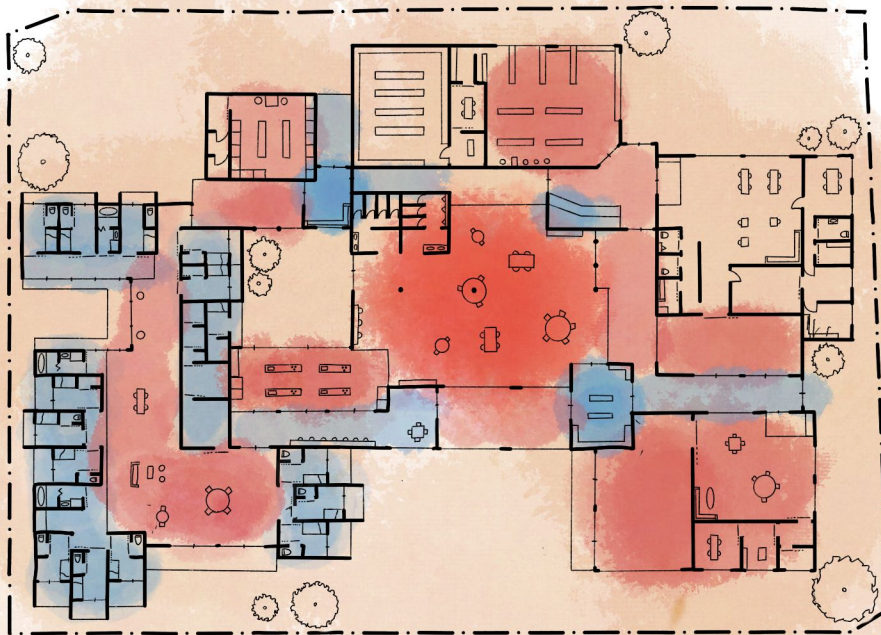
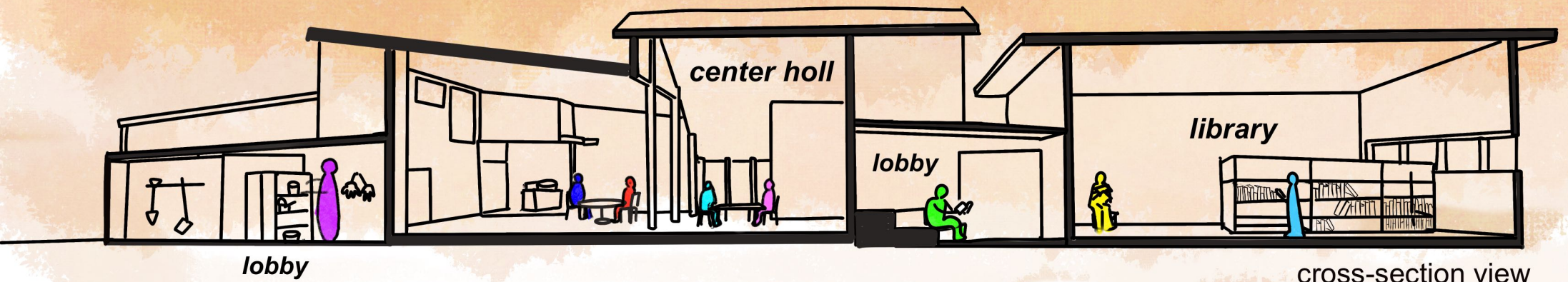
~Elements that engage the five senses~



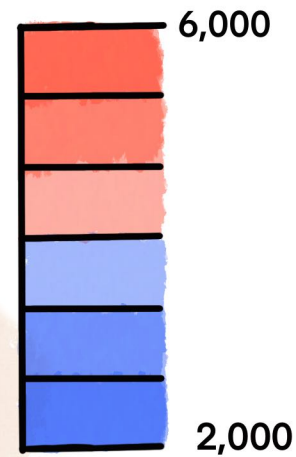
The smell of food wafting from the common kitchen into the center hall.



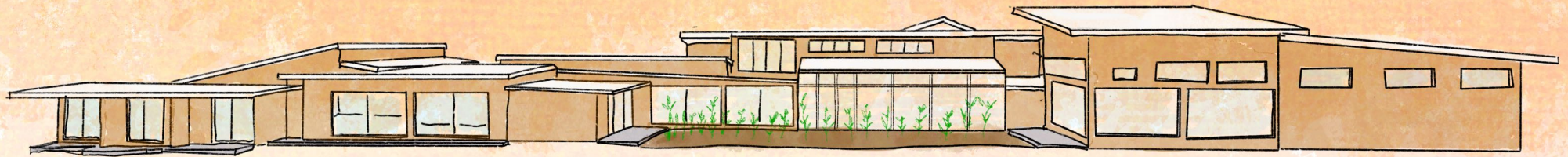
Interaction created in the fields and by the windows of the community center.



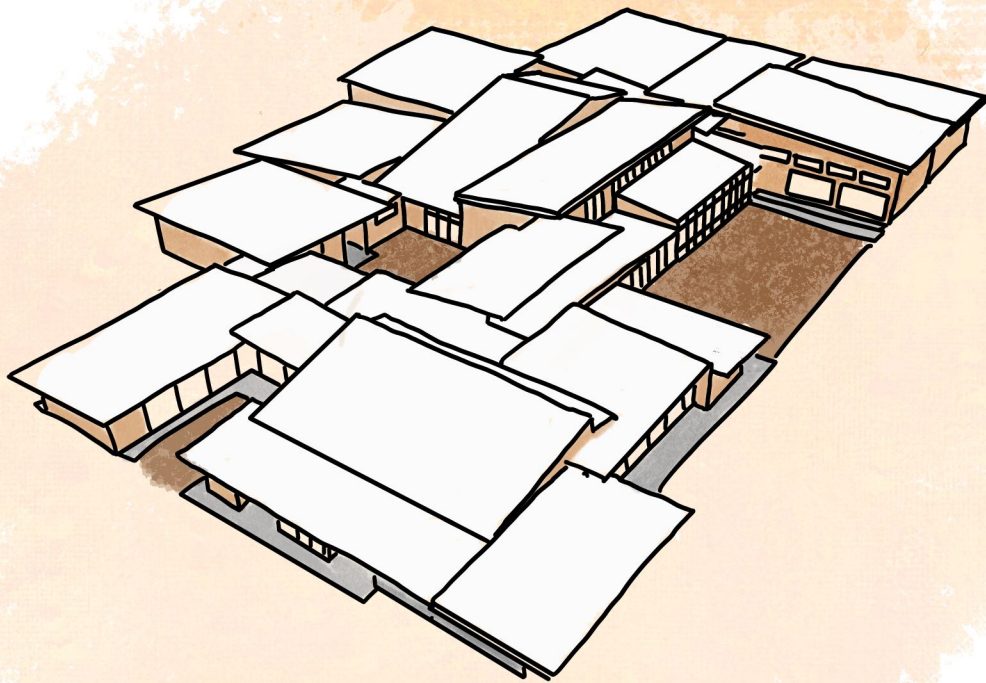
ceiling height (mm)



Varying the ceiling height of adjacent spaces creates dynamism in the continuity of space, transforming the visual experience upon entering the next room.



South elevation



Single-flow roofs are stacked in different directions to let light in through the gaps between them.



It represented a "town" made up of many small houses.